



# Helical **bevel** Gear **Reducers**

# Features



The technological content of B-Series gear reducers allows for an **extraordinary performance/lifespan ratio**. These highly versatile gear units are successfully used in a vast number of industrial and civil applications. B-Series units offer **excellent value for money** and **output torque/weight ratio**, especially considering that they need very limited servicing. The units are available in cast iron (sizes 063 to 163) or aluminium (sizes A42 to A73) casing.



**B-PB**  
Fitted for motor coupling  
- Coupling with flexible coupling



**CB**  
With compact motor



**IB**  
With input shaft

## CAST IRON

### Sizes:

**060-080-100-125-140-150-160**

- Casing with feet FC, flange SC and universal UC
- Gearing 3 reduction stages
- Gleason spiral bevel gear pairs with run-in profile, mounted as second reduction stage for a higher resistance
- High-strength casings optimized with FEM analysis and input and output flanges of grey cast-iron G200 to ensure top level performances and high reliability
- Excellent mechanical strength
- Gears hardened and tempered with shaved or ground profile
- Load capacity calculated and verified according to ISO 6336 and AGMA 2001
- Painted with RAL 5010 blue epoxy-polyester powder according to DIN 1843
- ATEX versions available 2GD/3GD

## ALUMINIUM

### Sizes:

**A40-A50-A70**

- Universal casing
- Gearing with 2 and 3 reduction stages
- Hypoid bevel gears for size A40 and A50, gleason bevel gear pairs for size A70, all with run-in profile
- Casing in die-cast aluminium alloy
- Excellent mechanical strength while being and particularly lightweight
- Gears hardened and tempered with shaved or ground profile
- Load capacity calculated and verified according to ISO 6336 and AGMA 2001
- Painted with RAL 5010 blue epoxy-polyester powder according to DIN 1843
- ATEX version available 3GD



**BA**  
Fitted for motor coupling



**CBA**  
With compact motor



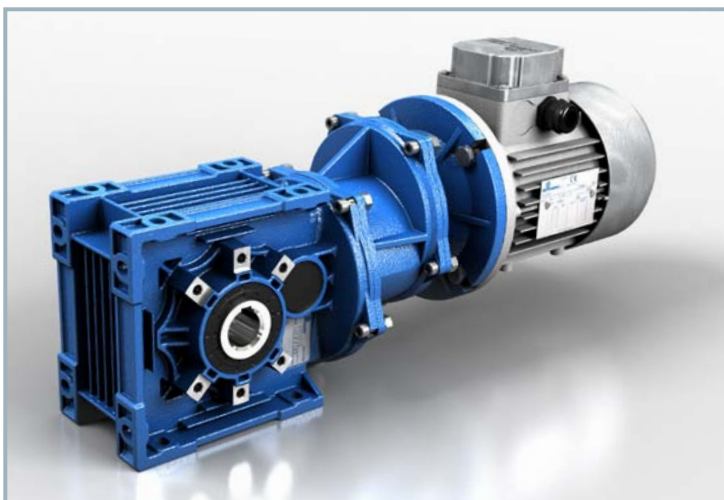
**IBA**  
With input shaft

# Range



	Ø [mm]	Output Torque M <sub>2</sub> [Nm]	Ratio	
		Max	Min	Max
B063	35 - 40	600	5,71	157,42
B083	40 - 45	850	7,81	144,77
B103	50	1.800	8,13	165,25
B123	60	3.500	7,97	180,40
B143	70	5.000	10,84	187,24
B153	90	8.000	10,49	165,42
B163	100	13.000	8,89	154,83

- Power from 0,18 up to 90 kW with three phase 4 pole motors
- Reduction ratios between 5,71 and 187,24
- Torque max 13.000 Nm
- Admissible radial loads max 80.000 N



	Ø [mm]	Output Torque M <sub>2</sub> [Nm]	Ratio	
		Max	Min	Max
BA40	20	120	7,62	78,17
BA50	25 - 28	220	7,91	342,65
BA70	30 - 35	450	8,36	442,76

- Power from 0,12 kW up to 4,8 kW with three phase 4 pole motors
- Reduction ratios between 7,62 and 442,76
- Torque max 450 Nm
- Admissible radial loads max 10.000 N



# Accessories



## TorqueArm



Available for the sizes:  
063 - 083 - 103 - 123  
A40 - A50 - A70



Available for the sizes:  
143 - 153 - 163

## ShrinkDisk



## SolidOutputShaft



Single Output Shaft

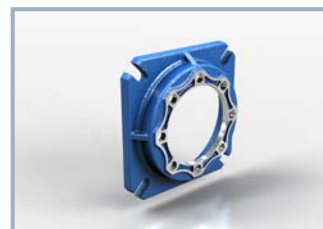


Double Output Shaft

## OtherAccessories

**BackstopDevice**  
**ProtectionCoverkit**  
**ReinforcedOutput**

## OutputFlange



FA



FB - FC - FD

	FA	FB	FC	FD
B063	•	•	•	/
B083	•	•	•	/
B103	•	•	•	/
B123	•	•	•	/
B143	/	•	/	/
B153	/	•	•	/
B163	/	•	/	/
BA40	•	•	•	•
BA50	•	•	•	•
BA70	•	•	/	/

• Available  
/ Not available

# Versions



**B... SC**  
Flange Mounting



**B... FC**  
Foot Mounting



**B... UC**  
Foot/Flange Mounting

---

Different versions are available with hollow output shafts and single/double solid output shafts.

---



**BA.. 2 Stages**  
Foot/Flange Mounting



**BA.. 3 Stages**  
Foot/Flange Mounting

---

Different versions are available with hollow output shafts.  
Single/double solid output shafts are only available for the BA70.

---

# Worldwide

DP-B EN/2013/REV.0



Italy	Malaysia
Australia	Poland
Benelux	Portugal
Bulgaria	South Korea
China	Spain
Finland	Sweden
France	Thailand
India	Turkey
Ireland	United Kingdom
Israel	Ukraine
Lithuania	USA

## Subsidiaries

Germany  
France  
Spain  
United Kingdom  
Denmark  
USA  
China  
India

[www.motovario-group.com](http://www.motovario-group.com)

