



Worm Geared Motors

NMRV[®]



MOTOVARIO[®]

HEART OF MOTION

Features

NMRV and NMRVpower worm gear reducers currently re-present the most advanced solution to market requirements in terms of **efficiency** and **flexibility**. The new NMRVpower series, also available as compact integral helical/worm option, has been designed to guarantee a **high modularity**. Low number of basic models can be applied to a **wide range of power ratings** guaranteeing high performance.

NMRV[®]

Sizes:

025-030-040-050-130-150



NMRV

Fitted for motor coupling



NMRV-P

Fitted for motor coupling

NMRV[™] POWER

Sizes:

063-075-090-110

- Cases up to 110 in die-cast aluminium alloy and over 130 in G200 grey cast iron
- Aluminium units are supplied complete with synthetic oil and allow for universal mounting positions, with no need to modify lubricant quantity
- Worm wheel: bronze Cu Sn12 Ni2 (UNI7013-10)
- Ground worm profile ZI (UNI4760)
- Excellent mechanical strength and particularly lightweight
- Loading capacity in accordance with: ISO.14521, DIN.3996, BS 721, AGMA 6034, ISO 6336, DIN 3990, DIN 743, ISO 281
- Size 030 and over are painted with RAL 5010 blue epoxy-polyester powder according to DIN 1843
- Available with pre-stage unit: HA31 for NMRV040/NMRV050, HW for NMRV-P Series
- Worm gear reducers are available with different combinations: NMRV/NMRV, NMRV/NMRV-P, NMRV-P/NMRV-P and NMRV-P/NMRV
- Reducers available in ATEX versions 3GD/2GD

Other Versions



NRV With Input Shaft



NRV-P With Input Shaft

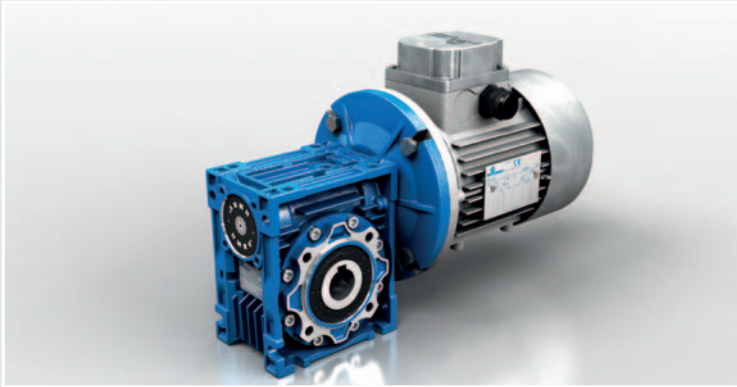


NMRV/NMRV-P Combined Worm Geared Motor

Range



Worm Geared Motor



| | Ø [mm] | Output torque M ₂ [Nm] | Ratio | |
|------------|-------------------|-----------------------------------|-------|-----|
| | | Max | Min | Max |
| NMRV 025 | 11 | 14 | 5 | 60 |
| NMRV030 | 14 | 22 | | 80 |
| NMRV040 | 18 - 19 | 48 | | 100 |
| NMRV050 | 24 - 25 | 88 | | |
| NMRV-P 063 | 25 - 28 | 160 | | |
| NMRV-P 075 | 28 - 30 - 32 - 35 | 247 | | |
| NMRV-P 090 | 35 - 38 - 40 | 432 | | |
| NMRV-P 110 | 42 | 725 | | |
| NMRV 130 | 45 | 1.050 | | |
| NMRV 150 | 50 | 1.550 | | |

- Power from 0,06 kW up to 15 kW with three phase 4 pole motors
- Ratios between 5 and 100
- Max Torque 1.550 Nm
- Admissible radial loads max 18.000 N

Combined Worm Geared Motor



| | Output torque M ₂ [Nm] | Ratio | |
|-----------------------|-----------------------------------|-------|-------|
| | Max | Min | Max |
| NMRV 030/040 | 73 | 100 | 5.000 |
| NMRV 030/050 | 145 | | |
| NMRV 030 / NMRV-P 063 | 271 | | |
| NMRV 040/050 | 145 | | |
| NMRV 040 / NMRV-P 063 | 271 | | |
| NMRV 040 / NMRV-P 075 | 444 | | |
| NMRV 040 / NMRV-P 090 | 700 | | |
| NMRV 050 / NMRV-P 090 | 700 | | |
| NMRV 050 / NMRV-P 110 | 1.265 | | |
| NMRV-P 063/110 | 1.265 | | |
| NMRV-P 063 / NMRV 130 | 1.760 | | |
| NMRV-P 063 / NMRV 150 | 2.670 | | |

- Power from 0,06 kW up to 1,85 kW with three phase 4 pole motors
- Ratios between 100 and 5.000
- Max Torque 2.670 Nm



Accessories



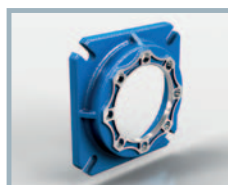
Protection Cover



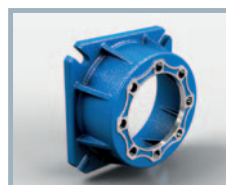
Output Flanges

| | FA | FB | FC | FD | FE |
|------------|----|----|----|----|----|
| NMRV 025 | • | / | / | / | / |
| NMRV 030 | • | / | / | / | / |
| NMRV 040 | • | • | • | • | / |
| NMRV 050 | • | • | • | • | / |
| NMRV-P 063 | • | • | • | • | • |
| NMRV-P 075 | • | • | / | / | / |
| NMRV-P 090 | • | • | • | • | / |
| NMRV-P 110 | • | • | / | / | / |
| NMRV 130 | • | / | / | / | / |
| NMRV 150 | • | / | / | / | / |

• Available
/ Not Available



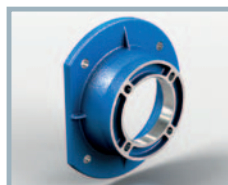
FA



FB



FC



FD

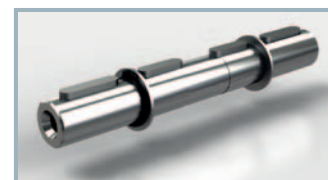


FE

Solid Output Shaft

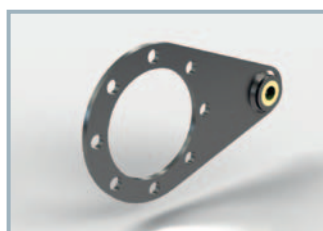


Single output shaft



Double output shaft

Torque Arm



Torque Limiter

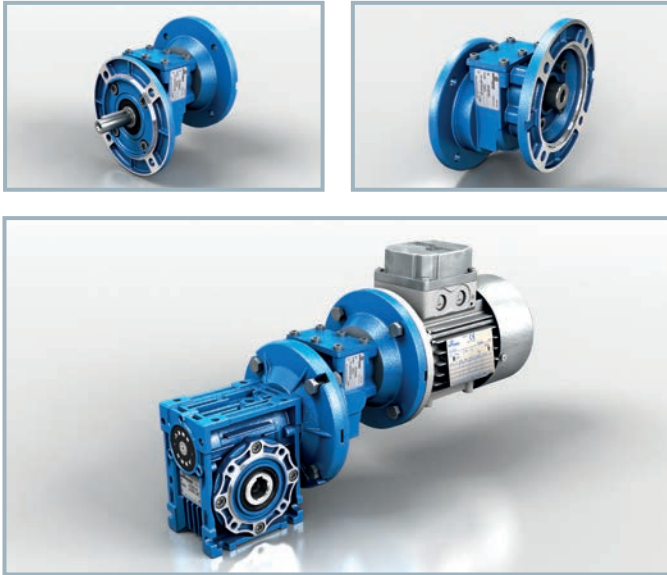
Available versions NMRL 050
and NMRL-P 063-075-090



Other Accessories

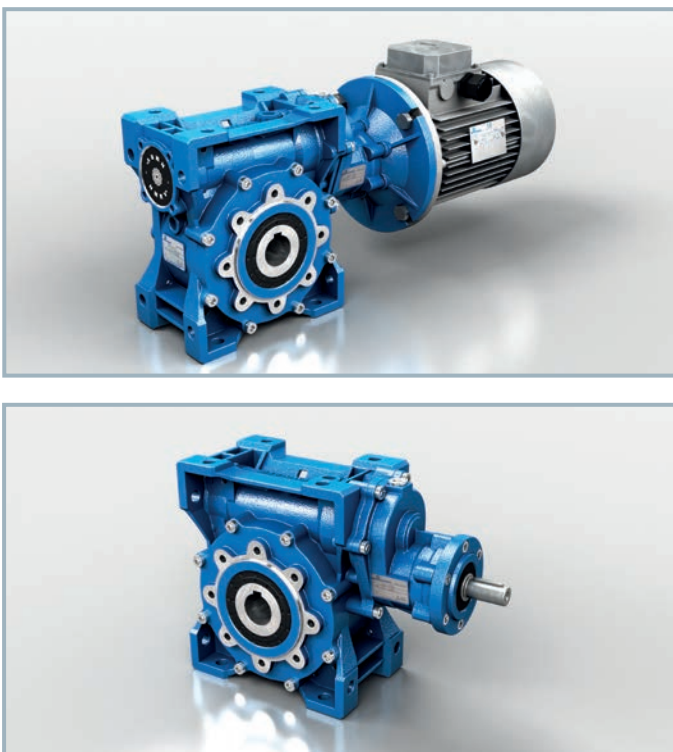
- Viton oil seals
- Low/high temperature and food grade oil
- Filling/Drain/Breather/Level plug
- Reinforced Output

NMRV Worm geared motor with HA31 pre-stage



- HA31 is the new single stage helical gear reducer available as pre-stage for the worm gear boxes NMRV040 and NMRV050; it can be supplied as a separate unit to be mounted on any type of fitted geared motor
- Die-cast aluminium alloy casing; gears hardened and tempered with shaved profile steel 20MnCr5 (UNI7846)
- Available as unpainted or painted with RAL 5010 blue epoxy-polyester powder
- Power up to 1,1 kW and motor sizes up to 080
- Combined total ratios between 22,08 and 315
- Max Torque of group HA31+worm gear reducer 206 Nm

NMRV-P Worm geared motor with HW pre-stage



- The pre-stage units called HW are two: HW030 which can be mounted on gearboxes NMRVpower063-075 and HW040 which can be fitted with gearboxes NMRVpower 090-110
- The pre-stage construction is modular and therefore it can be supplied for various motor (PAM) with B5 and B14 flange
- Casing in aluminium alloy. Steel gears 20MnCr5(UNI7846), hardened, tempered and carefully scraped
- Power up to 1,85 kW and motor sizes up to 090
- Combined total ratios between 22,08 and 1.083,33
- Max Torque of group HW+worm gear reducer 1.189 Nm

Worldwide

DP-VSF EN/2013/REV.0



| | |
|-----------|----------------|
| Italy | Malaysia |
| Australia | Poland |
| Benelux | Portugal |
| Bulgaria | South Korea |
| China | Spain |
| Finland | Sweden |
| France | Thailand |
| India | Turkey |
| Ireland | United Kingdom |
| Israel | Ukraine |
| Lithuania | USA |

Subsidiaries

Germany
Austria
France
Spain
United Kingdom
Denmark
USA
China
India

www.motovario-group.com

