

Product Overview Drive Solutions with Bauer Geared Motors



BAUER GEAR MOTOR™

A REGAL REXNORD BRAND

STANDARD

F&B SOLUTIONS

ENERGY EFFICIENCY SOLUTIONS

EX SOLUTIONS

WATER-/WASTEWATER SOLUTIONS

DECENTRAL GEARED MOTOR SOLUTIONS

Helical-Geared Motors

BG Series



Compact and economical inline helical geared motors for long lifetime under arduous conditions.

- Motor power from 0.03 kW to 75 kW
- 13 gearbox sizes for torques from 20 Nm to 18500 Nm
- New attachment possibilities with low design height
- High efficiency through 2 stage base design
- High enclosure IP65 as standard

Parallel Shaft Geared Motors

BF Series



Shaft-mounted geared motors with integrated torque arm are easily integrated and economically applied.

- Motor power from 0.03 kW to 75 kW
- 10 gearbox sizes for torques from 90 Nm to 18500 Nm
- Gearbox housing with integral torque arm
- High efficiency through 2 stage base design
- High enclosure IP65 as standard

Bevel-Geared Motors

BK Series

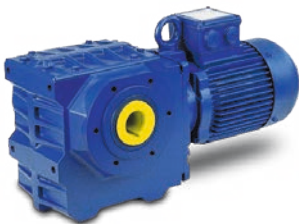


Power-dense, right-angle, bevel-geared motors ensure the highest efficiency especially when used with frequency inverters.

- Motor power from 0.03 kW to 75 kW
- 10 gearbox sizes for torques from 80 Nm to 18500 Nm
- Right angle gearbox with universal attachment possibilities
- High efficiency through 2 stage base design
- High enclosure IP65 as standard

Worm-Geared Motors

BS Series



Economical, right-angle, worm-geared motors install easily in the tightest applications.

- Motor power from 0.03 kW to 5.5 kW
- 8 gearbox sizes for torques from 25 Nm to 1000 Nm
- Hollow shaft version already available from 25 Nm
- High loadable worm gearing for long lifetime
- High enclosure IP65 as standard

Monorail Geared Motors

BM Series



A complete range of geared motors for light and heavy load monorail applications.

- Torques from 30 Nm up to 680 Nm
- Radial force up to 25.000 N
- Flexible mounting on the running gear
- Enclosure IP65 as standard
- Improved efficiency – lower energy consumption – ideal as travelling drives
- Reverse motion of the gearbox is possible

HiflexDRIVE

Standard Design



The HiflexDrive consists of three gear sizes BK04, BK08 and BK17.

- **Gearbox BK04** ^[3]
Torque ^[1] 80 Nm
Ratios ^[2] 7,25 - 63,33
- **Gearbox BK08**
Torque ^[1] 200 Nm
Ratios ^[2] 4,44 - 102,5
- **Gearbox BK17**
Torque ^[1] 330 Nm
Ratios ^[2] 4,54 - 108,6
- **Motors**
Power rating ^[2] 0,18 kW ... 6,3 kW
Efficiency Classes w/o, IE1 through IE5
Mains supply 110 V ... 690 V, 50/60 Hz
Enclosure IP65 (Standard)

^[1] Torque is dependent on ratio
^[2] Ratio and power is dependent on the motor size
^[3] On request

STANDARD

F&B SOLUTIONS

ENERGY EFFICIENCY
SOLUTIONS

EX SOLUTIONS

WATER-/WASTEWATER
SOLUTIONSDECENTRAL
GEARED MOTOR
SOLUTIONS

HiflexDRIVE

Aseptic Design

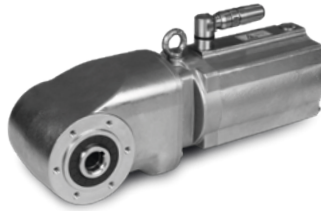


Compact and space saving geared motors fulfill the highest hygiene standards through their smooth and water repellent coating.

- FDA conform Aseptic coating
- Acid and alkali resistant coating (pH 2 through pH 12)
- Rounded edges and corners
- Motor without cooling ribs and fan
- Flexible connection technology
- High enclosure IP67/IP69K

HiflexDRIVE

Stainless Steel Design

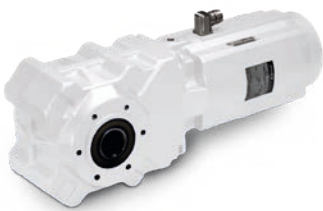


The stainless steel housing provide these geared motors with the highest mechanical resilience in washdown applications.

- Stainless steel housing
- Highest mechanical resilience
- Rounded edges and corners
- Motor without cooling ribs and fan
- Flexible connection technology
- IP67/IP69K



AsepticDRIVE



Geared motors for the food & beverage industry as well as for all applications with high cleaning intensity or ambient conditions such as dust, fluff etc.

- Motor without fan and cooling fins
- Motor power
DA08 - DA11 0,25 kW - 2,2 kW
SA08 - SA09 0,55 kW - 3 kW
- Available with helical, parallel shaft, bevel and worm gears
- Motor winding in Iso Class F with thermistors as standard
- Enclosure IP67 and IP69K with acid and alkali resistant coating as standard
- Motor connection through standard stainless steel plug connector

CleanDRIVE



Geared motors for the food & beverage industry in enclosure IP66 and IP67 with acid and alkali resistant coating as standard.

- Motor without fan and cooling fins
- Motor power
DA05 - DA09 0,06 kW - 1,1 kW
SA08 - SA09 0,55 kW - 3 kW
- Motor winding in Iso Class F with thermistors as standard
- Motor connection through standard terminal box or stainless steel cable gland

Surface Protection

C1 to C5-M, IM2



Maximum corrosion protection for motors that are exposed to extreme environmental conditions.

- **Standard** Indoor areas
- **C1** Indoor areas, very low environmental pollution
- **C2** Outdoor areas, low environmental pollution
- **C3** Indoor and outdoor areas, medium environmental pollution (Production area with low humidity and air pollution)
- **C4** Indoor and outdoor areas, very high environmental pollution (Production area with high humidity and air pollution)
- **C5-I** Outdoor areas, very high environmental pollution, in aggressive atmospheres
- **C5-M** Coast and Offshore areas with high salt concentration
- **IM2** Brackish water

STANDARD

F&B SOLUTIONS

ENERGY EFFICIENCY SOLUTIONS

EX SOLUTIONS

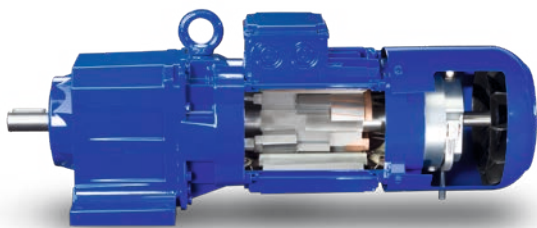
WATER-/WASTEWATER SOLUTIONS

DECENTRAL GEARED MOTOR SOLUTIONS

Energy Saving Geared Motors

P _N [kW]	IE1 [ASM]	IE2 [ASM]	IE3 [ASM]	IE4 [ASM]
0.03	D04LA4			
0.04	D04LA4			
0.06	D04LA4			
	D06LA4			
0.09	D04LA4			
	D06LA4			
0.11	D04LA4			
0.12	DSE04LA4	DHE05LA4	DPE05LA4	
		DHE06LA4	DPE06LA4	
0.18	DSE05LA4	DHE05LA4	DPE07LA4	
		DHE06LA4		
0.25	DSE06LA4	DHE07LA4	DPE08MA4	
0.37	DSE07LA4	DHE08MA4	DPE08LA4	
0.55	DSE08MA4	DHE08LA4	DPE08XA4	DPE08XB4
0.75	DSE08LA4	DHE08XA4	DPE08XB4	DPE09XA4
			DPE09LA4	
1.1	DSE08XA4	DHE09LA4	DPE09XA4	DPE09XB4
			DPE09XB4	
1.5	DSE09LA4	DHE09XA4	DPE09XB4	DPE09XB4C
2.2	DSE09XA4	DHE09XA4C	DPE09XB4C	DPE11LA4
			DPE11MA4	
3	DSE11SA4	DHE11MA4	DPE11LA4	DPE11LB4
			DPE11LB4	
4	DSE11MA4	DHE11LA4	DPE11LB4	DPE11LB4C
			DPE13MA4	
5.5	DSE11LA4	DHE11LA4C	DPE11LB4C	
			DPE13LA4	
			DPE13XA4	
7.5	DSE13MA4	DHE13LA4	DPE13XA4	
9.5	DSE13LA4	DHE16MB4	DPE16LB4	
11	DSE16MB4	DHE16LB4	DPE16LB4	
15	DSE16LB4	DHE16XB4	DPE16XB4	
18.5	DSE16XB4	DHE18LB4	DPE18LB4	
22	DSE18LB4	DHE18XB4	DPE18XB4	
30	DSE18XB4		DPE20XA4	
37			DPE22MA4	

P _N [kW]	IE1 [PMSM]	IE2 [PMSM]	IE3 [PMSM]	IE4 [PMSM]	IE5 [PMSM]
0.12				S4E04SA4-1	
0.157		SHE04SA4-1			
0.2					S5E04SA4-1
					S5E06MA4
0.25				S4E06MA4	S5E04SA4-1
0.315				S4E04SA4-1	
0.37	SSE06MA4			S4E06LA4	
0.4					S5E06MA4
0.55	SSE06LA4				S5E06MA4
0.75			SPE06MA4		S5E06LA4
0.78				S4E08MA4	
1.1			SPE08LA4	S4E06LA4	
1.55	SSE08LA4			S4E09SA4	S5E08MA4
2.2		SHE09SA4		S4E08MA4	S5E08LA4
				S4E09SA4	S5E09XA4
3			S4E11SA6		
3.1			SPE08LA4		
			SPE09XA4		
4			SPE11SA6	S4E09SA4	
4.2					S5E11MA6
5.5				S4E11SA6	S5E09XA4
				S4E11MA6	S5E11LA6
6.3					S5E09XA4
7.5			SPE11LA6	S4E11SA6	S5E11MA6
9.5					S5E11MA6
					S5E11LA6
11				S4E11MA6	S5E11LA6
15					S5E11LA6



Motor-Technologies IE1 • IE2 • IE3 • IE4 • IE5

● = in planning

IE-Class	0.12	0.18	0.25	0.37	0.55	0.75	1.1	1.5	2.2	3	4	5.5	7.5	9.5	11	15	18.5	22	30	37	
IE1 Asynchronous	●	●	●	●	●	●	●	●	●	●	●	●	●	●	●	●	●	●	●	●	●
IE2 Asynchronous	●	●	●	●	●	●	●	●	●	●	●	●	●	●	●	●	●	●	●	●	●
IE3 Asynchronous	●	●	●	●	●	●	●	●	●	●	●	●	●	●	●	●	●	●	●	●	●
IE4 Asynchronous					●	●	●	●	●	●	●	●	●	●	●	●	●	●	●	●	●
IE3 PMSM						●	●			●	●		●								
IE4 PMSM	●	●	●	●	●	●	●	●	●	●	●	●	●	●	●	●	●	●	●	●	●
IE5 PMSM		●	●	●	●	●		●		●	●	●	●	●	●	●	●	●	●	●	●

Explosion-proof BAUER Geared Motors



Geared motors suitable for use in explosive areas:

GAS Zones 1, 2
DUST Zones 21, 22




DXD	Zone 1	II 2 G Ex d(e) IIC T3...T4 Gb	0.12 ... 75 kW
DXE	Zone 1	II 2 G Ex e IIC T1...T4 Gb	0.12 ... 11 kW
SXE	Zone 1	II 2 G Ex e IIC T1...T4 Gb	0.55 ... 15 kW
DXN	Zone 2	II 3 G Ex nA IIC T3 Gc	0.03 ... 30 kW
DXC	Zone 21	II 2 D Ex tb IIIC T120°C IP66 Db	0.03 ... 30 kW
DXC	Zone 21	II 2 D Ex tb IIIC T120°C IP66 Db	0.03 ... 22 kW
SXC	Zone 21	II 2 D Ex tb IIIC T120°C...160°C IP66 Db	
DXS	Zone 22	II 3 D Ex tc IIIC T120°C...160°C IP65 Dc	0.03 ... 30 kW
DXD	Zone 1/21	II 2 G Ex d(e) IIC T3...T4 Gb	
		II 2 D Ex tb IIIC T120°C...160°C IP65 Db	0.12 ... 75 kW
DXE	Zone 1/21	II 2 G Ex e IIC T1...T4 Gb	
		II 2 D Ex tb IIIC T120°C...160°C IP66 Db	0.12 ... 11 kW
SXE	Zone 1/21	II 2 G Ex e IIC T1...T4 Gb	
		II 2 D Ex tb IIIC T120°C...160°C IP66 Db	0.55 ... 15 kW
DXS	Zone 2/22	II 3 G Ex nA IIC T1...T3 Gc	
		II 3 D Ex tc IIIC T120°C...160°C IP65 Dc	0.03 ... 30 kW

Series S in IE4* for explosion hazardous areas

Design torque M_N : 5 Nm – 48 Nm

Rated power P_N : 0,75 kW – 15 kW

Protection type:
Increased Safety Zone 1
 II 2 G Ex eb IIC T1 - T3 Gb

Dust explosion protection Zone 21
 II 2 D Ex tb IIIC T 160°C ... 120° Db

S.XE.08MA4
S.XE.08LA4
S.XE.09SA4
S.XE.09XA4
S.XE.11SA6
S.XE.11MA6
S.XE.11LA6
S.XC.08MA4
S.XC.08LA4
S.XC.09SA4
S.XC.09XA4
S.XC.11SA6
S.XC.11MA6
S.XC.11LA6



*Individual motor designs can show lower efficiency levels as IE4 at the nominal operating point.

STANDARD

F&B SOLUTIONS

ENERGY EFFICIENCY
SOLUTIONS

EX SOLUTIONS

WATER-/WASTEWATER
SOLUTIONS

DECENTRAL
GEARED MOTOR
SOLUTIONS

IP68 gear motor for submersible operation

IP68 geared motors are most suitable where it is required to convey or transport foul, waste, river or rain water, and all types of sludge-containing waters in communal or industrial areas. They are frequently used in agitators for mixing, homogenising, etc. or in extremely wet areas or completely submersed under water.

- Special design for continuous submersible operation
- Gear housing and motor are completely waterproof
- Maximum leakage protection
- Special seals available for the output shaft
- Electronic leakage detection is available as an option for early recognition of errors
- Energy-saving asynchronous and permanent magnet motors up to IE4
- IP68 motors with brake available
- Gear motor can be operated at constant power in air or in a medium
- Fully cast cable to ensure maximum level of sealing
- Usable down to water depths of 5 m (greater depths also possible)
- Special coating allows extreme underwater conditions (coating resistant against many aggressive chemicals)
- Optionally also available with plug version of the cable
- Power classes: 0.37 – 11 kW (in Ex version on request)
- Use in potentially explosive atmospheres possible (e.g. Atex Zone 1)



IE4

high
corrosion
protection

customised sealing systems

stainless steel shafts

advanced coating systems

IP68

leakage sensors

Compact geared motor solution

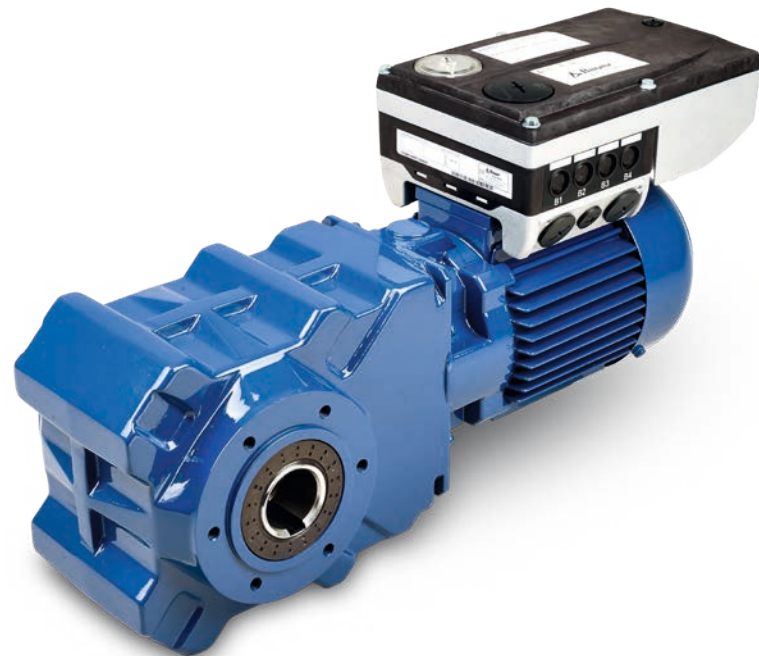
- **Adapted motor windings** matched to VFD for optimised efficiency
- **Optimised motor parameters** over the entire speed and torque range
- **Motor and VFD combinations** surpass IES 2 system efficiency class according to EN 50598-2 and IEC 61800-9-2
- **All necessary options** integrated very compactly, including safety functions

Motor combinations

Permanent magnet synchronous motors (PMSM)

P_N [kW]	Type	n_N [rpm]	P_{VFD} [kW]
0.55	S08MA4	3000	0,55
0.55	S08MA4	1500	0,55
0.75	S08MA4	3000	0,75
0.75	S08MA4	1500	0,75
1.1	S08MA4	3000	1,1
1.1	S08LA4	1500	1,1
1.5	S08MA4	3000	1,5
1.5	S08LA4	1500	1,5
1.5	S09SA4	1500	1,5
2.2	S08MA4	3000	2,2
2.2	S08LA4	3000	2,2
2.2	S09SA4	1500	2,2
2.2	S09XA4	1500	2,2
3	S08LA4	3000	3
3	S09XA4	1500	3
3	S11SA6	1500	3
4	S09SA4	3000	4
4	S11SA6	1500	4
4	S11MA6	1500	4
5.5	S09XA4	3000	5,5
5.5	S11MA6	1500	5,5
5.5	S11LA6	1500	5,5
7.5	S11SA6	3000	7,5
7.5	S11MA6	3000	7,5
7.5	S11LA6	1500	7,5

EtaK2.0



Asynchronous motors (ASM)

P_N 50Hz [kW]	Typ	Base frequency 50 Hz Motor: 350 V/50 Hz/Y		Base frequency 87 Hz Motor: 202 V/50 Hz/D	
		P_{FU} [kW]	I_N [A]	P_{FU} [kW]	I_N [A]
0.12	DHE06LA4	0.37	1.3	0.37	1.3
0.18	DHE06LA4	0.37	1.3	0.37	1.3
0.25	DHE07LA4	0.37	1.3	0.55	1.8
0.37	DHE08MA4	0.37	1.3	0.75	2.4
0.55	DHE08LA4	0.55	1.8	1.1	3.2
0.75	DHE08XA4	0.75	2.4	1.5	3.9
1.1	DHE09LA4	1.1	3.2	2.2	5.6
1.5	DHE09XA4	1.5	3.9	3	7.3
2.2	DHE09XB4	2.2	5.6	4	9.5
3	DHE11MA4	3	7.3	5.5	13
4	DHE11LA4	4	9.5	7.5	16.5
5.5	DHE11LB4	5.5	13	-	-
7.5	DHE13LA4	7.5	16.5	-	-

The motor combinations listed here are subject to change. Please contact our staff for more information.

Bauer Gear Motor Facilities

Europe

Germany

Eberhard-Bauer-Str. 37
73734 Esslingen - Germany
+49 711 3518 0

Slovakia

Továrenská 49
953 01 Zlaté Moravce - Slovakia
+421 37 6926100

United Kingdom

Unit 1, Nat Lane Business Park
Winsford, Cheshire
CW7 3BS - United Kingdom
+44 1606 868600

North America

Charlotte, NC

701 Carrier Drive
Charlotte, NC 28216 - USA
+1 800-387-0130

Asia Pacific

China

No. 18 HuanZhen Road
Dabo Industrial Zone - BoGoang Village
ShaJing Town - BaoAn District
518104 Shenzhen City
Guangdong Province - China
+86 755 27246308

Customer Service

Belgium

1702 Groot-Bijgaarden
+32 2 89372080

Finland

01530 Vantaa
+358 207 189700

France

1702 Groot-Bijgaarden
+32 2 89372080

Italy

35020 Padova (PD)
+39 049 8792327

China

Suite 301, #5 Lihpao Plaza,
88 Shen bin Road, Min hang District,
201106 Shanghai, China
Sales Enquiry : +86 (21) 5169 9255
Service hotline : +86 187 0171 2972



Scan to see all
the brands of
Regal Rexnord

Neither the accuracy nor completeness of the information contained in this publication is guaranteed by the company and may be subject to change in its sole discretion. The operating and performance characteristics of these products may vary depending on the application, installation, operating conditions and environmental factors. The company's terms and conditions of sale can be viewed at <https://www.bauergears.com/terms-and-conditions/sales-terms-and-conditions>. These terms and conditions apply to any person who may buy, acquire or use a product referred to herein, including any person who buys from a licensed distributor of these branded products.

©2023 by Bauer Gear Motor GmbH. All rights reserved. All trademarks in this publication are the sole and exclusive property of Bauer Gear Motor GmbH or one of its affiliated companies.

Images: Fotolia, Adobe Stock, Regal Rexnord and Bauer Archives