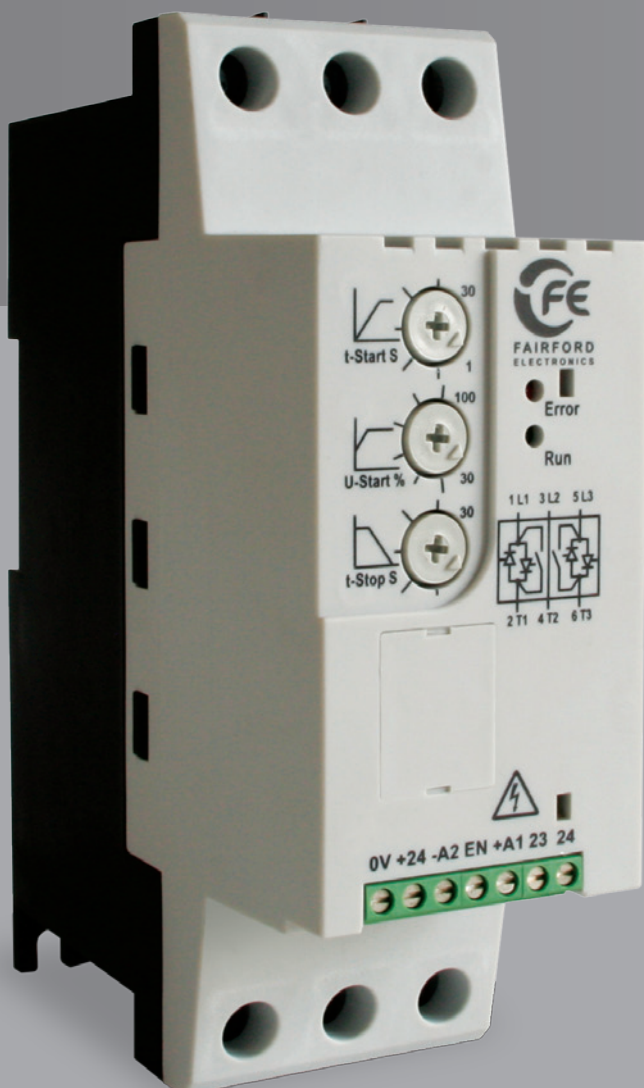




FAIRFORD
ELECTRONICS

PFFE

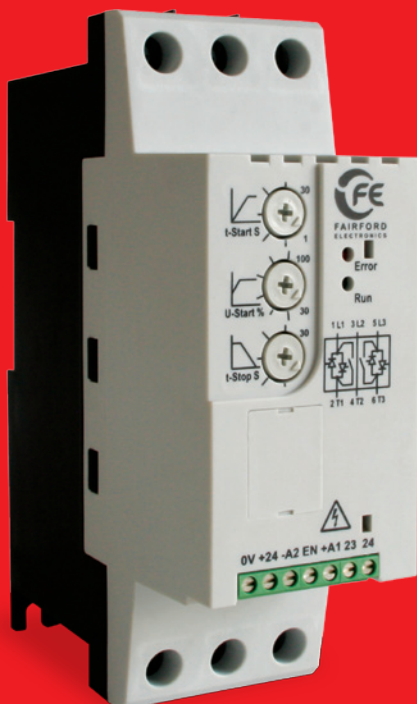
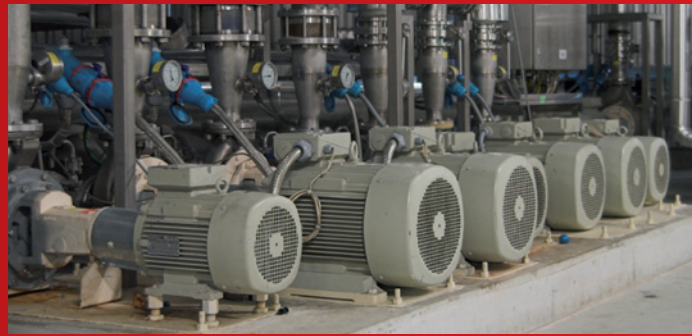


**The cost effective
starter for small AC
induction motors**

**The choice for small
to medium industrial
applications**

PFE

The PFE is an innovative development from Fairford Electronics, who have 30 years of experience producing innovative designs in the soft start market.



With ratings from 2.2kW to 22kW, the PFE is ideally placed to support any AC induction motors in use today. This makes the PFE the natural choice for distributors and customers alike.

Benefiting from Fairford's excellence in engineering, the PFE combines the quality and reliability you have come to expect. This is one product that ticks all the boxes.

Features and Benefits

Internally Bypassed

Reduces cost because the Soft Starter is out of circuit once it has done its job. This reduces cabinet size and the heat produced which again reduces cost.

Over Current Protected

Protects the Soft Starter against use above its duty rating.

45mm Wide (Size 1)

Same width as typical existing control gear for easy connectability and enables a more compact cabinet to be used.

DIN Rail Mounted

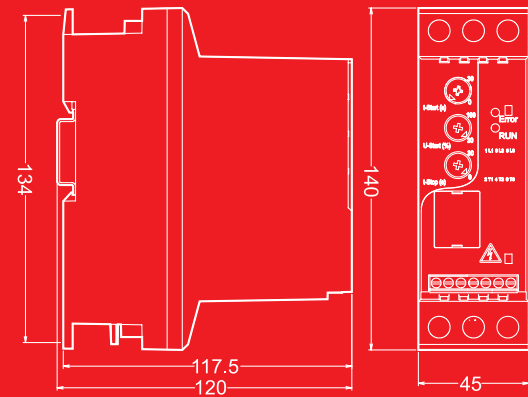
For easy installation – it just clips on.

PFE - Technical data

For application specific sizing go to www.fairford.com and click product selector

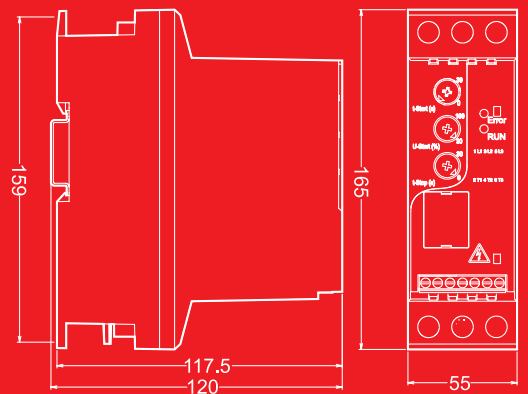
Operational Voltage (Ue)	230-460 VAC rms 3-Phase (-15% +10%)
Rated Frequency	50 - 60Hz +/- 2Hz
Index Rating	Standard AC53b: 3-5: 355 Class 10 AC53b: 3-23: 697
Control Supply	24V DC approx 4VA supplied externally to terminals 0 - 24.
Enable and Start/ Soft Stop	24V DC galvanically isolated terminals -A2, EN, +A1
Indication	Multi function LEDs on front panel
Start Time	1 to 30 seconds.
Stop Time	0 to 30 seconds
Start Duty	3 x FLC for 5 seconds at standard rating
Starts / Hour	10 starts per hour or 5 starts + 5 soft stops per hour.
Optimum Starts / Hour	Up to 60 Starts/Hr with Optional Fan
Internally bypassed	
Power Terminals	Input 1/L1, 3/L2 & 5/L3 output 2/T1, 4/T2 6/T3. IP20 Rated wire clamping terminals (unit is IP20)
Ambient Temperature	0°C to 40°C. Above 40°C de-rate linearly by 2% of unit FLC per °C to a derate of 40% at 60°C
Transport and Storage	-25°C to +60°C
Altitude	1000m. Above 1000m de-rate linearly by 1% of unit FLC per 100m to a max altitude of 2000m.
Humidity	Max. 85% non-condensing, not exceeding 50% at 40°C
Protection/IP Rating	IP20, NEMA 1
Design Standards	IEC 60947-4-2; EN60947-4-2 "AC Semiconductor Motor Controllers and Starters", UL, C-Tick & CE

Size 1 PFE-02 to PFE-10



Please note: All dimensions in mm

Size 2 PFE-12 to PFE-18



Please note: All dimensions in mm

Model	Current (I) Amps	Motor kW (400V)	Motor HP (460V)
PFE-02	5	2.2	3
PFE-04	7	3	5
PFE-06	9	4	6
PFE-08	12	5.5	7.5
PFE-10	16	7.5	10
PFE-12	22	11	15
PFE-14	30	15	20
PFE-16	36	18.5	25
PFE-18	40	22	30